

Prilog 1.

PODRUM 1:100

34,3
 17,3
 9,4
 11,3
 12,2
 7,1
 141,8
 23,2
 251,6 - 23,2 = 728,4

GAJE SE ;

DA

TRAJE

4 x 9,0 = 16,8

X 5 = 84 M²

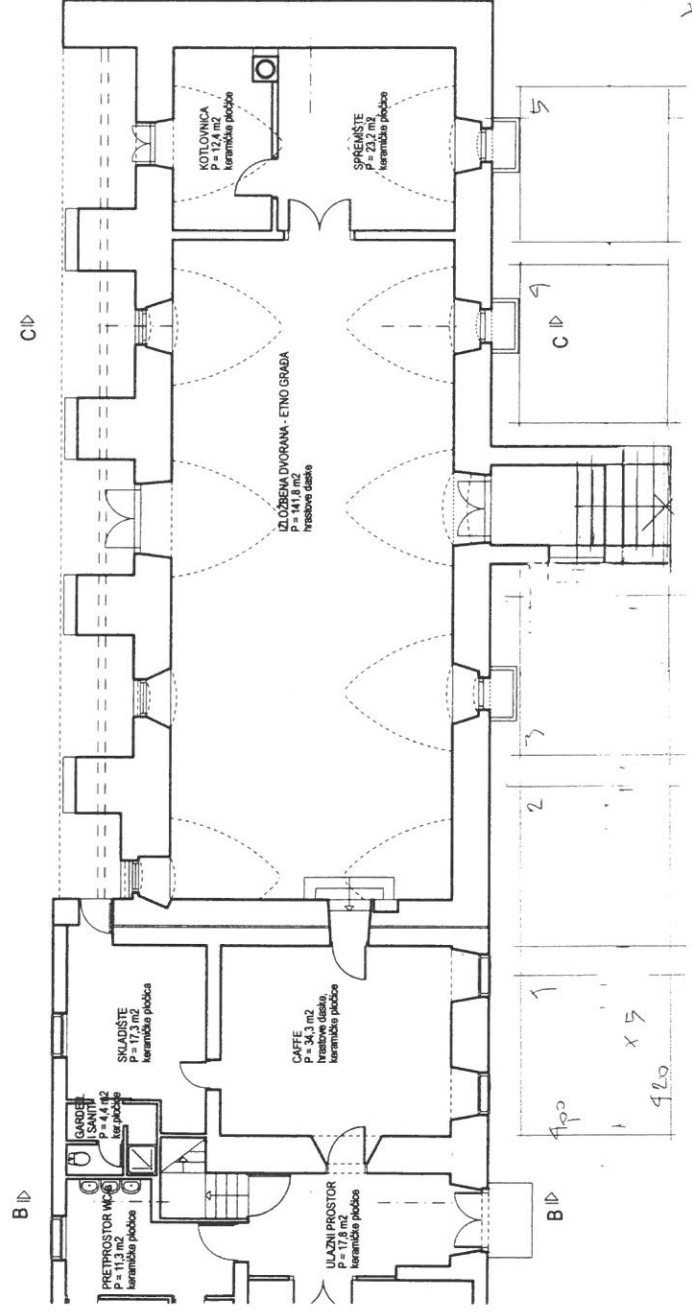
42

293,6 x 30 km

8808. km

X 3 = 26724

X 1,05 = 33070 km



POSTOJEĆE STANJE
 TEHNIČKA PODLOGA